

RECORDED  
LARAMIE COUNTY  
CHEYENNE, WY.

CERTIFIED LAND CORNER RECORDATION  
MAY 30 AM 11 27

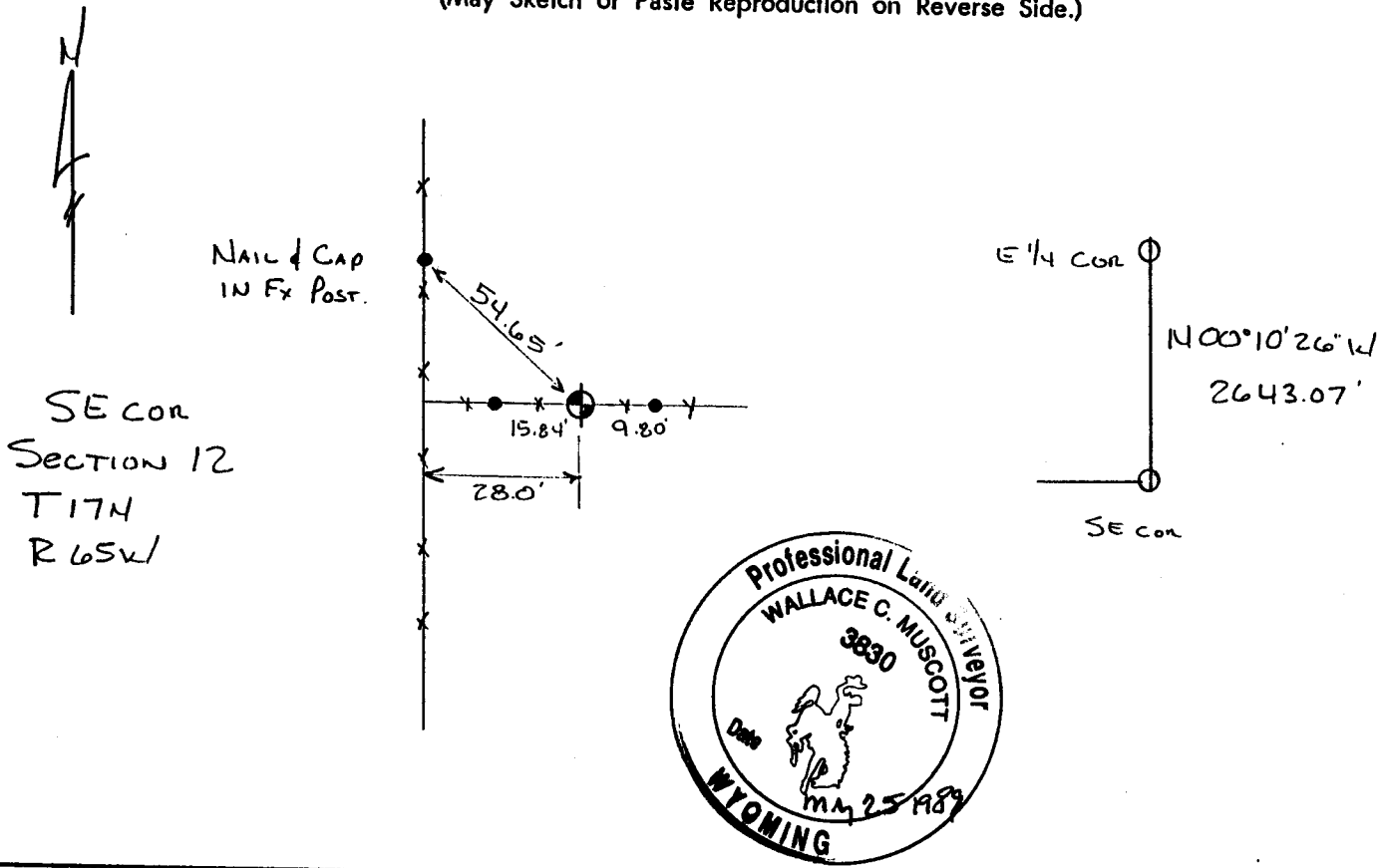
DESCRIPTION OF CORNER EVIDENCE FOUND, AND ORIGINAL RECORD (If known)

FOUND ORIGINAL STONE, BROKEN, SUBSEQUENT SURVEY  
VERIFIED ITS POSITION.

DESCRIPTION OF MONUMENT AND ACCESSORIES ESTABLISHED  
TO PERPETUATE THE ORIGINAL LOCATION OF THIS CORNER:

REPLACED THE BROKEN STONE WITH A CORPS OF  
ENGINEERS BRASS CAP ON A 30" X 5/8" REBAR, SET THE  
ORIGINAL STONE ALONG SIDE

SKETCH, WITH COURSE AND DISTANCE TO ADJACENT CORNER IF DETERMINED IN THIS SURVEY.  
(May Sketch or Paste Reproduction on Reverse Side.)



I, Wallace C. Muscott certify that I have carefully performed or reviewed the work done on the diagrammed corner as reported on this recordation form and approve the same.

Wallace C. Muscott  
Signature of Surveyor

3830  
Registration No.

STATE OF WYOMING,  
Office of Clerk and Recorder,  
County of \_\_\_\_\_

This "corner record" was filed for record on the \_\_\_\_\_ day of \_\_\_\_\_, 19\_\_\_\_, was noted on the cross-index plat and is assigned page No. \_\_\_\_\_, in book No. \_\_\_\_\_

Janet C. Whitehead  
County Official

Cross Index No. J-25 T. 17N R. 65W 6<sup>th</sup> Mer.  
 \_\_\_\_\_ T. \_\_\_\_\_ R. \_\_\_\_\_ Mer.  
 \_\_\_\_\_ T. \_\_\_\_\_ R. \_\_\_\_\_ Mer.  
 \_\_\_\_\_ T. \_\_\_\_\_ R. \_\_\_\_\_ Mer.  
 \_\_\_\_\_ T. \_\_\_\_\_ R. \_\_\_\_\_ Mer.  
 \_\_\_\_\_ T. \_\_\_\_\_ R. \_\_\_\_\_ Mer.  
 \_\_\_\_\_ T. \_\_\_\_\_ R. \_\_\_\_\_ Mer.